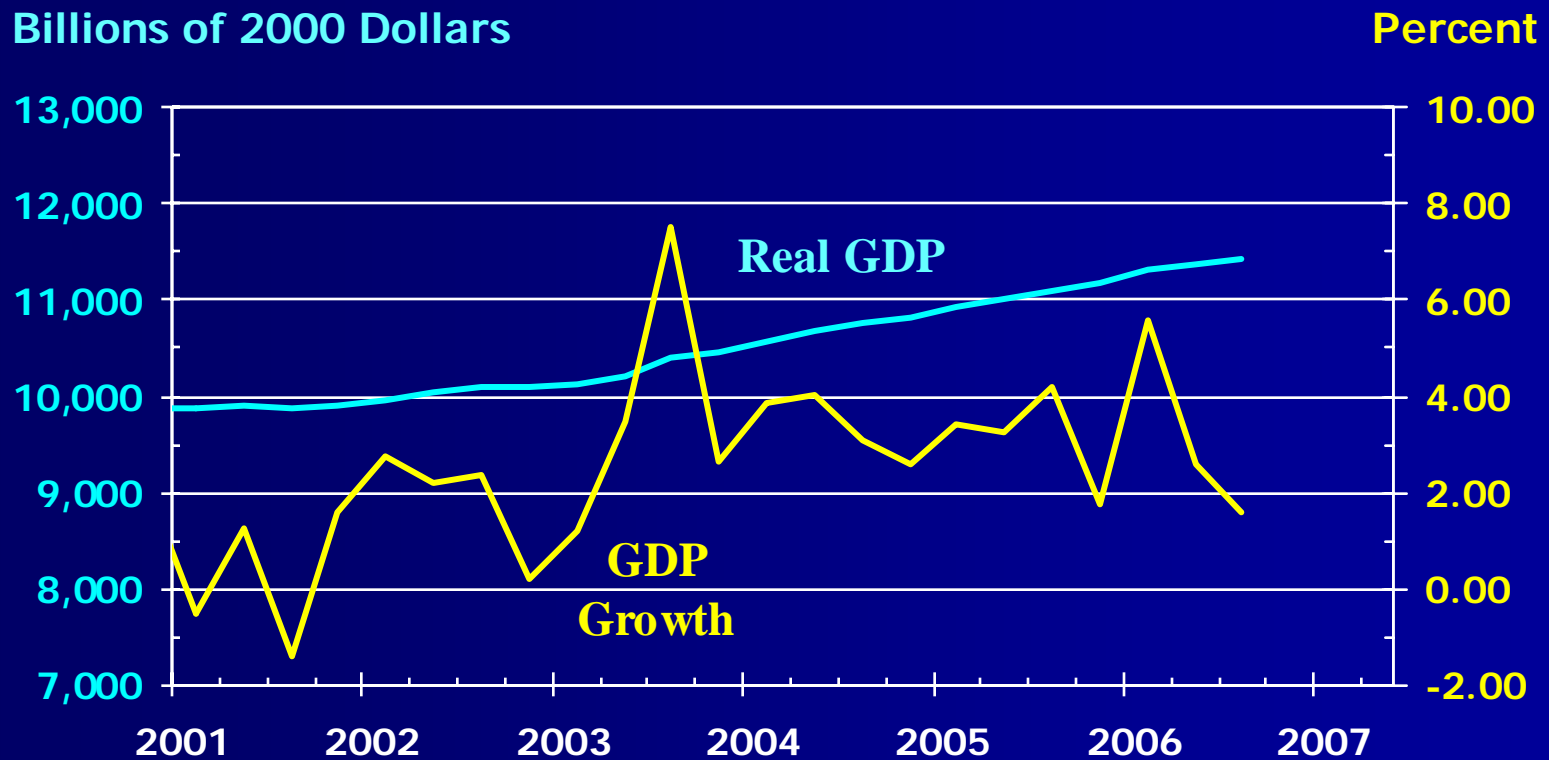


# Wichita Housing Market Overview

*Greater Kansas State Chapter of the  
Appraisal Institute  
January 18, 2007*



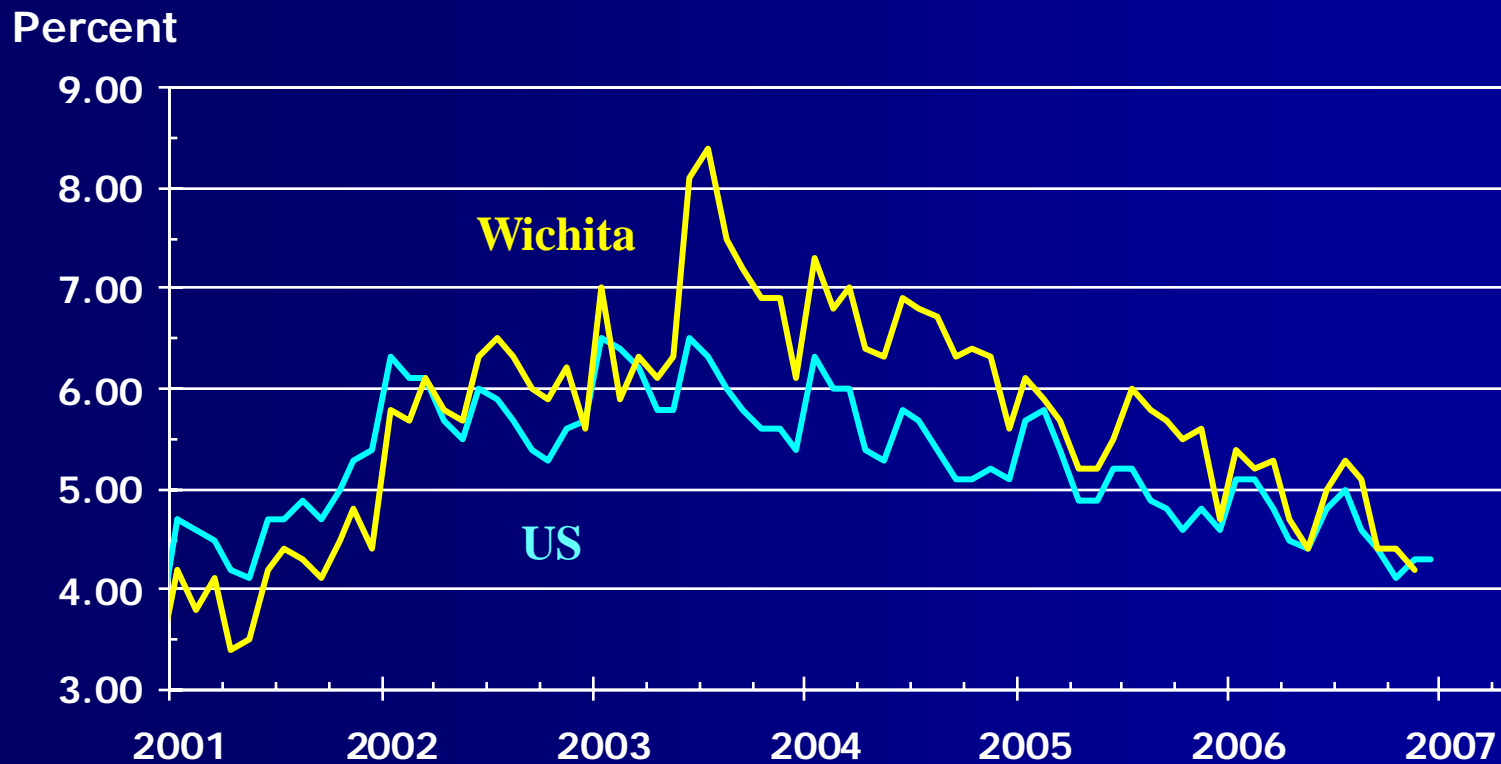
# Real Gross Domestic Product



Source: Bureau of Economic Analysis



# Unemployment Rate



Sources: Kansas Department of Human Resources;  
U.S. Bureau of Labor Statistics



# Employment: Non-farm Payrolls

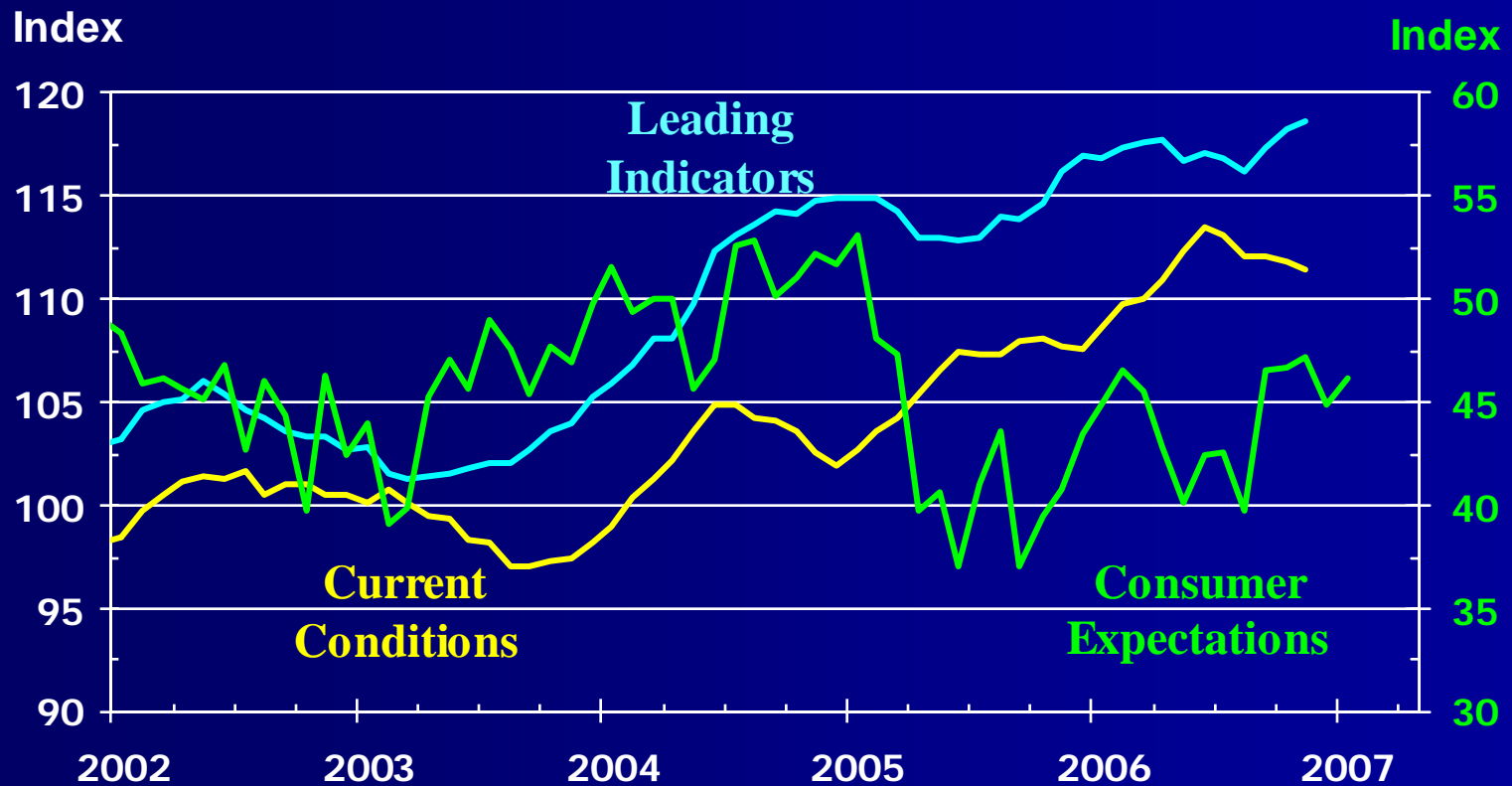
Year-over-Year Percentage Change



Sources: Kansas Department of Human Resources;  
U.S. Bureau of Labor Statistics



# WSU Economic Indices

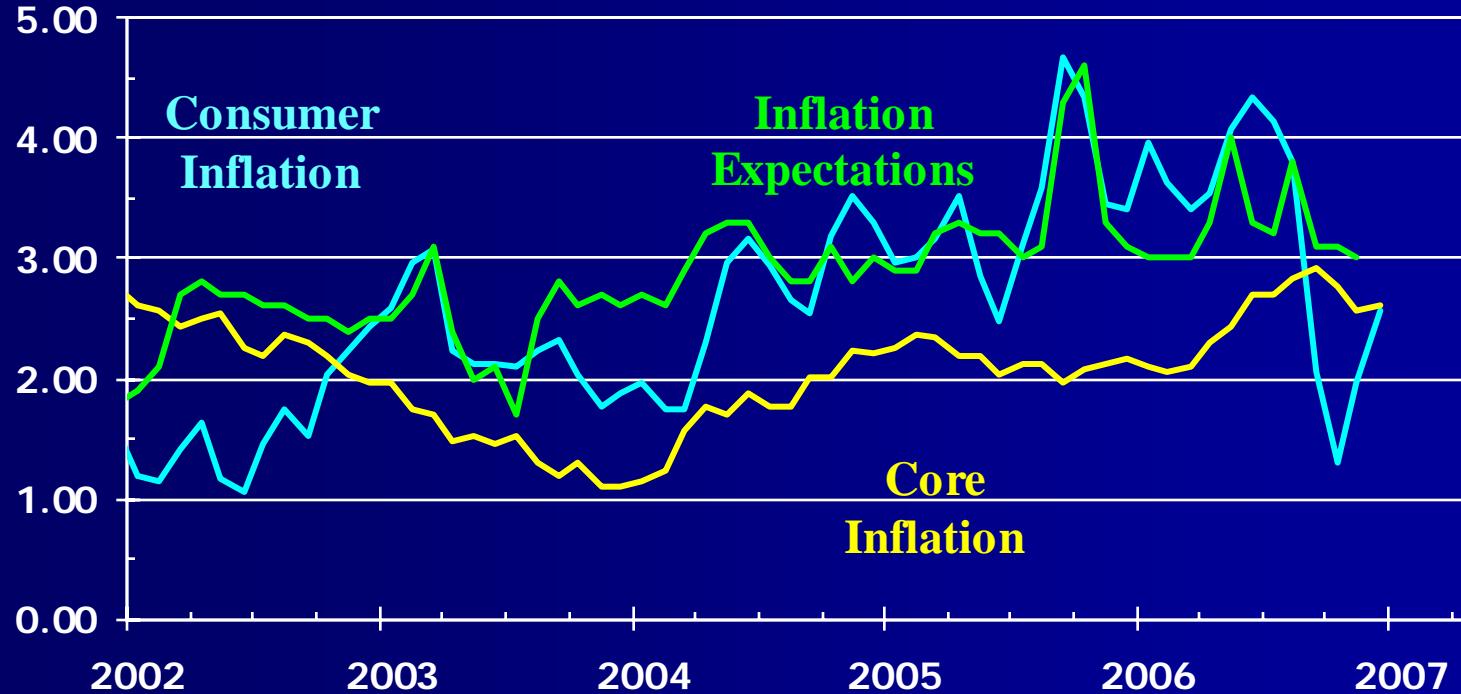


Source: WSU Center for Economic Development and Business Research



# Consumer Inflation

Percent



Sources: U.S. Bureau of Labor Statistics;  
University of Michigan



# Mortgage Rates

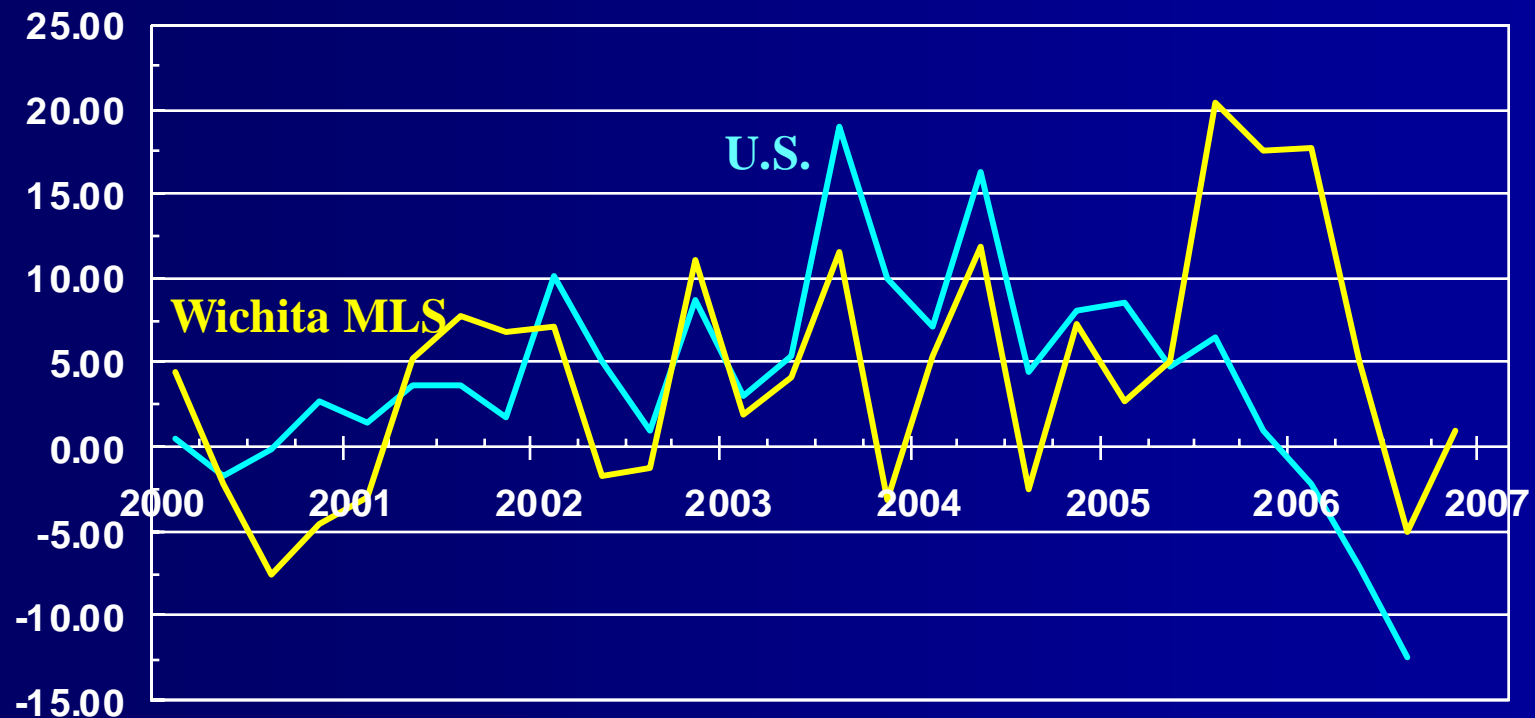


Sources: Freddie Mac;  
Mortgage Bankers Association of America



# Existing Home Sales

Year-over-year Percentage Change

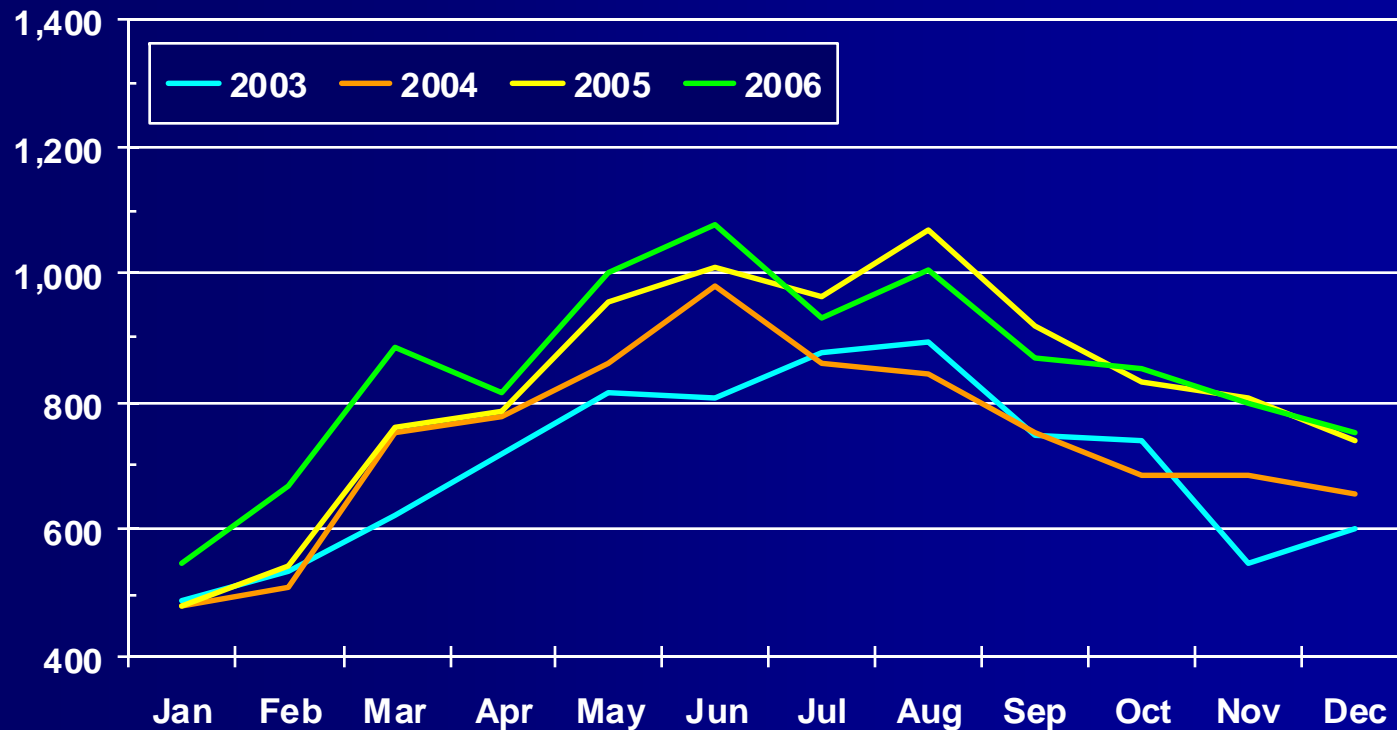


Sources: NAR; SCKMLS Statistics



# Wichita Area Existing Home Sales

Number of Sales

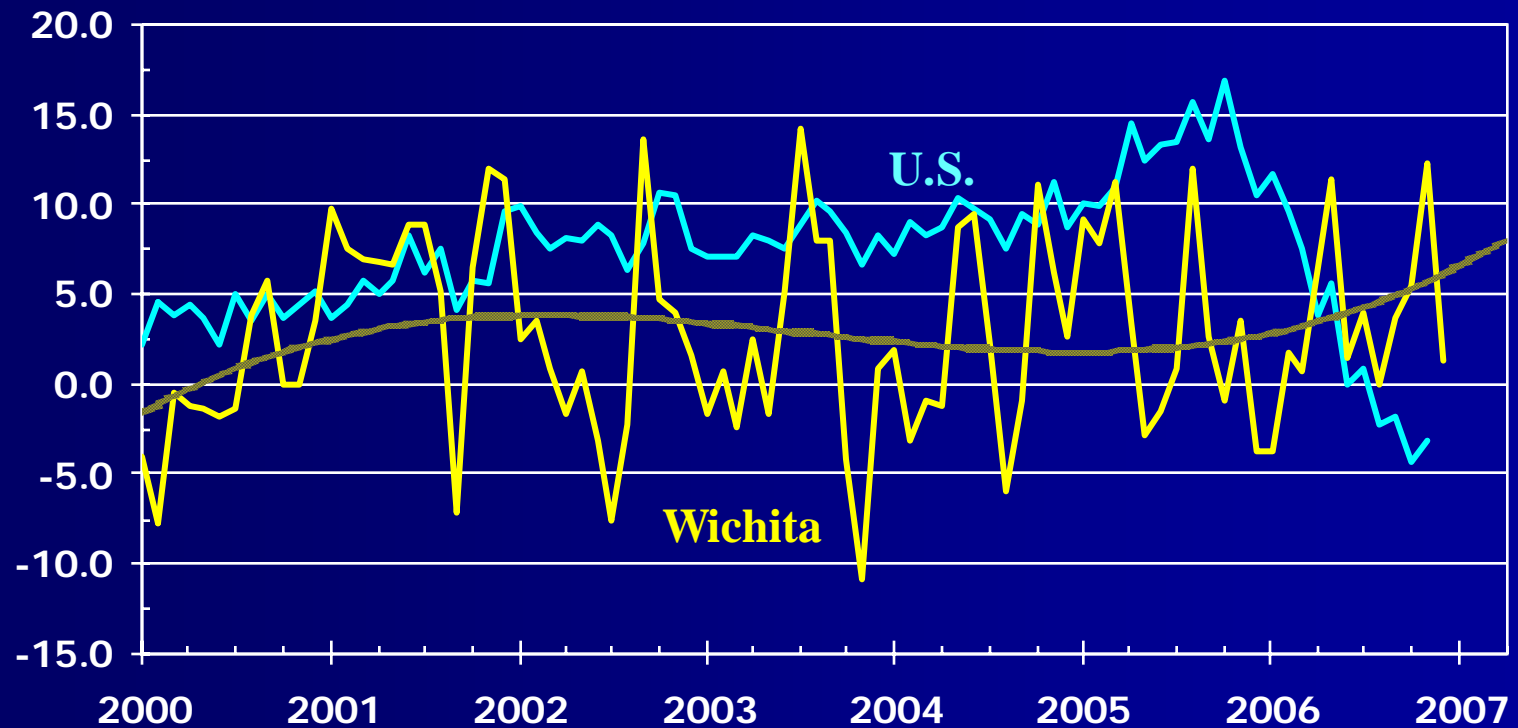


Source: SCKMLS Statistics



# Median Sale Price of Existing Homes

Year-over-year Percentage Change

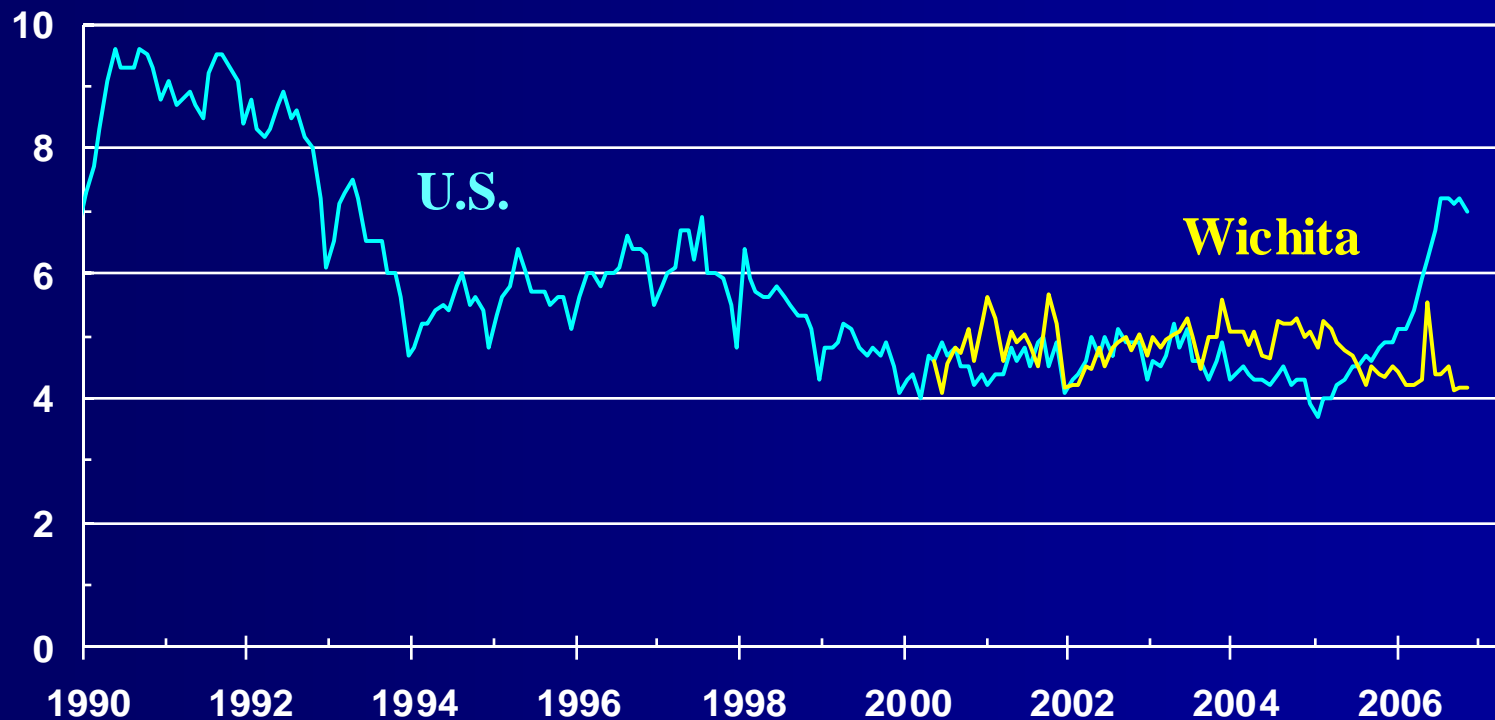


Sources: NAR; SCKMLS Statistics



# Inventory of Existing Homes Available for Sale

Months Supply (SA)

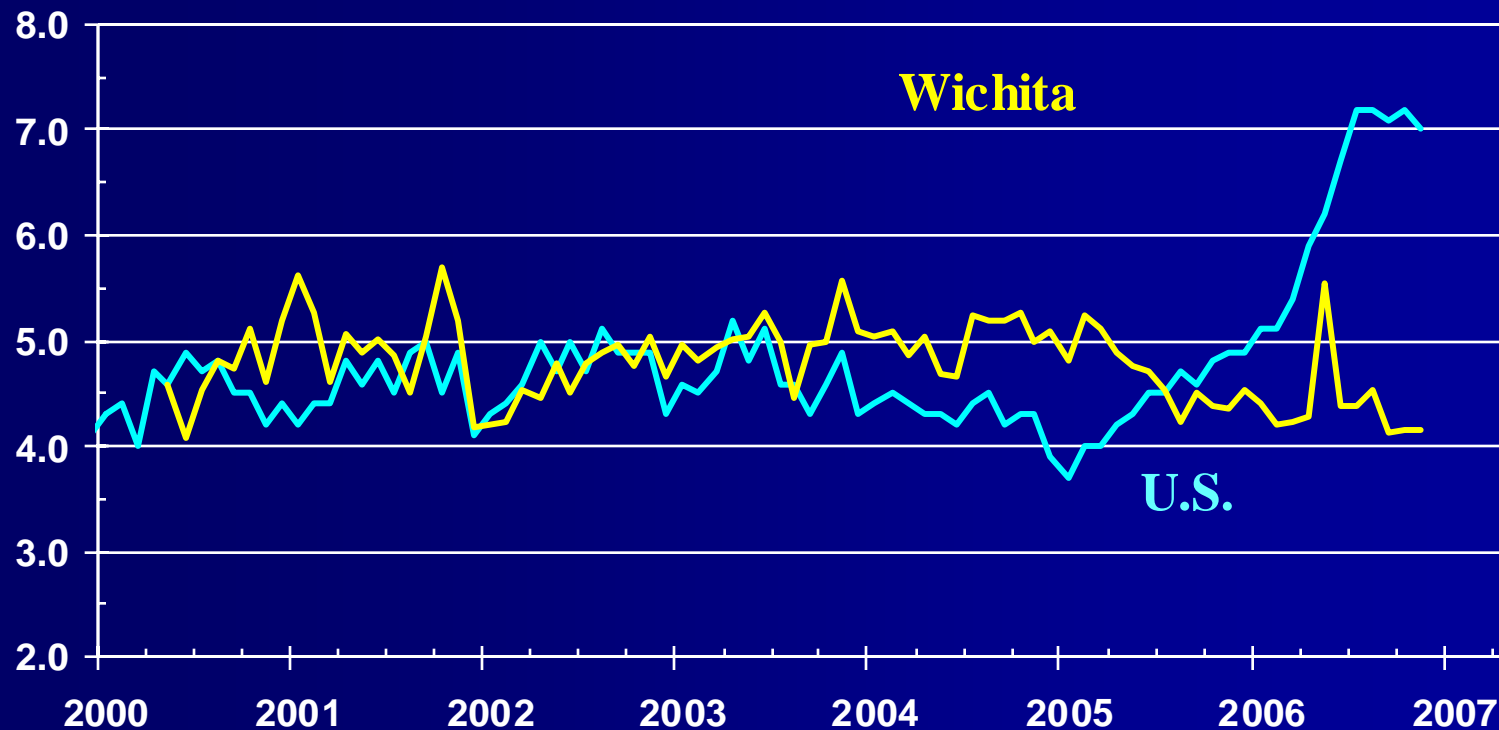


Sources: NAR; SCKMLS Statistics



# Inventory of Existing Homes Available for Sale

Months Supply (SA)

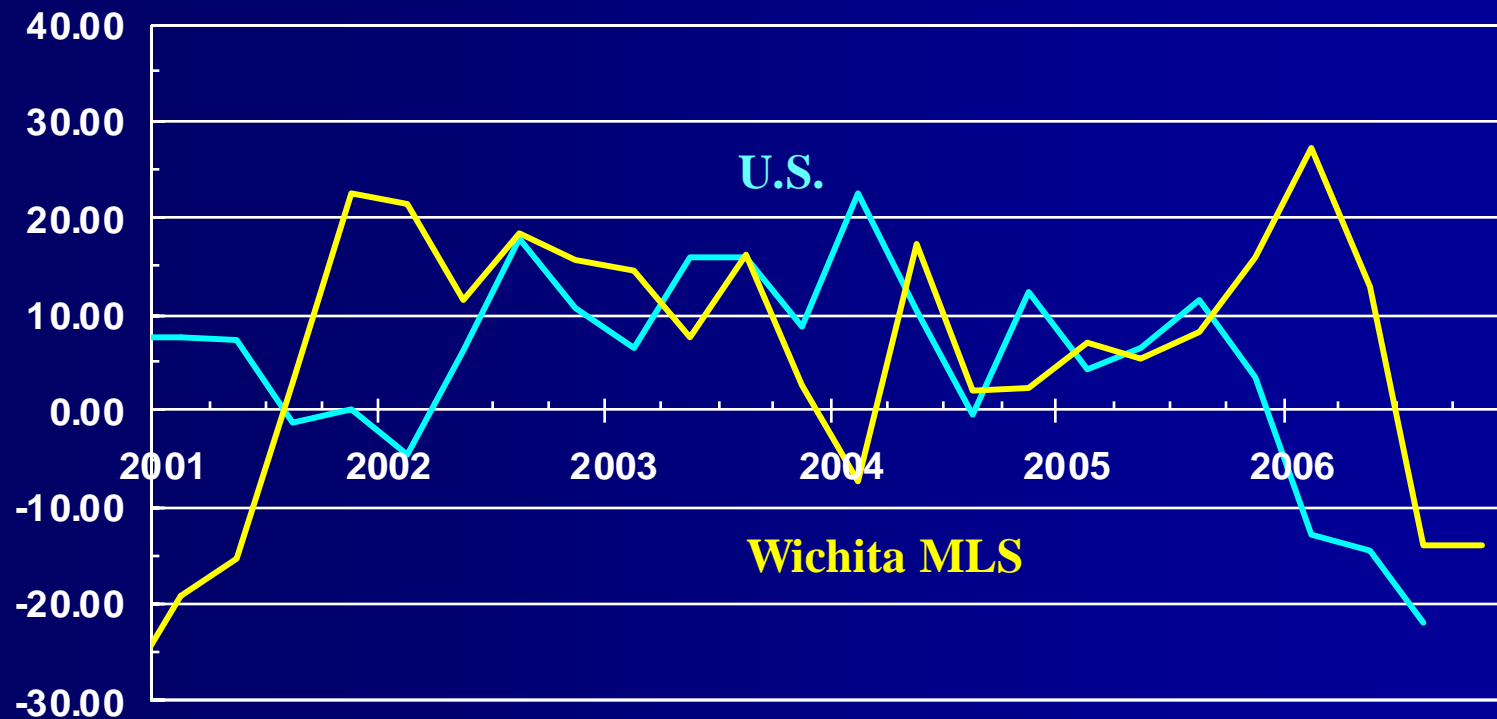


Sources: NAR; SCKMLS Statistics



# New Home Sales

Year-over-year Percentage Change

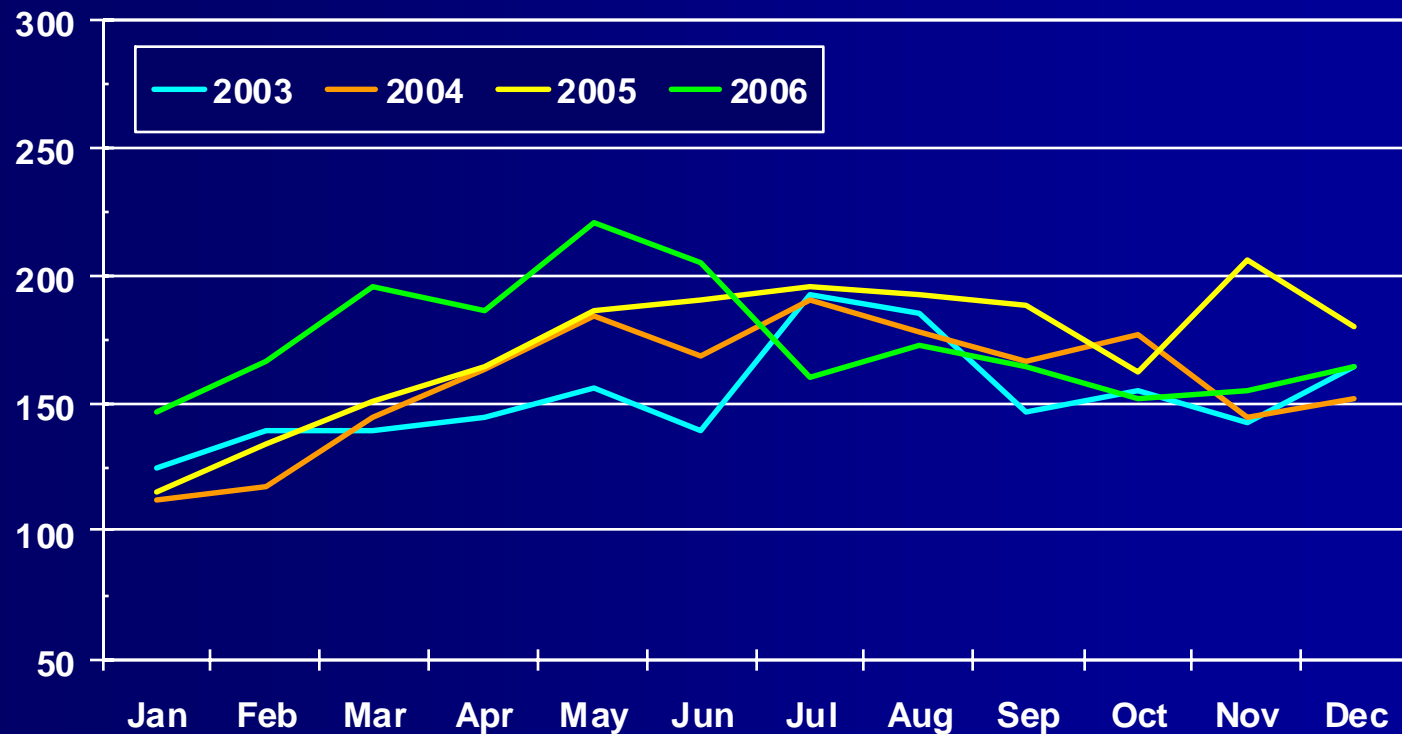


Sources: HUD; SCKMLS Statistics



# Wichita Area New Home Sales

Number of Sales

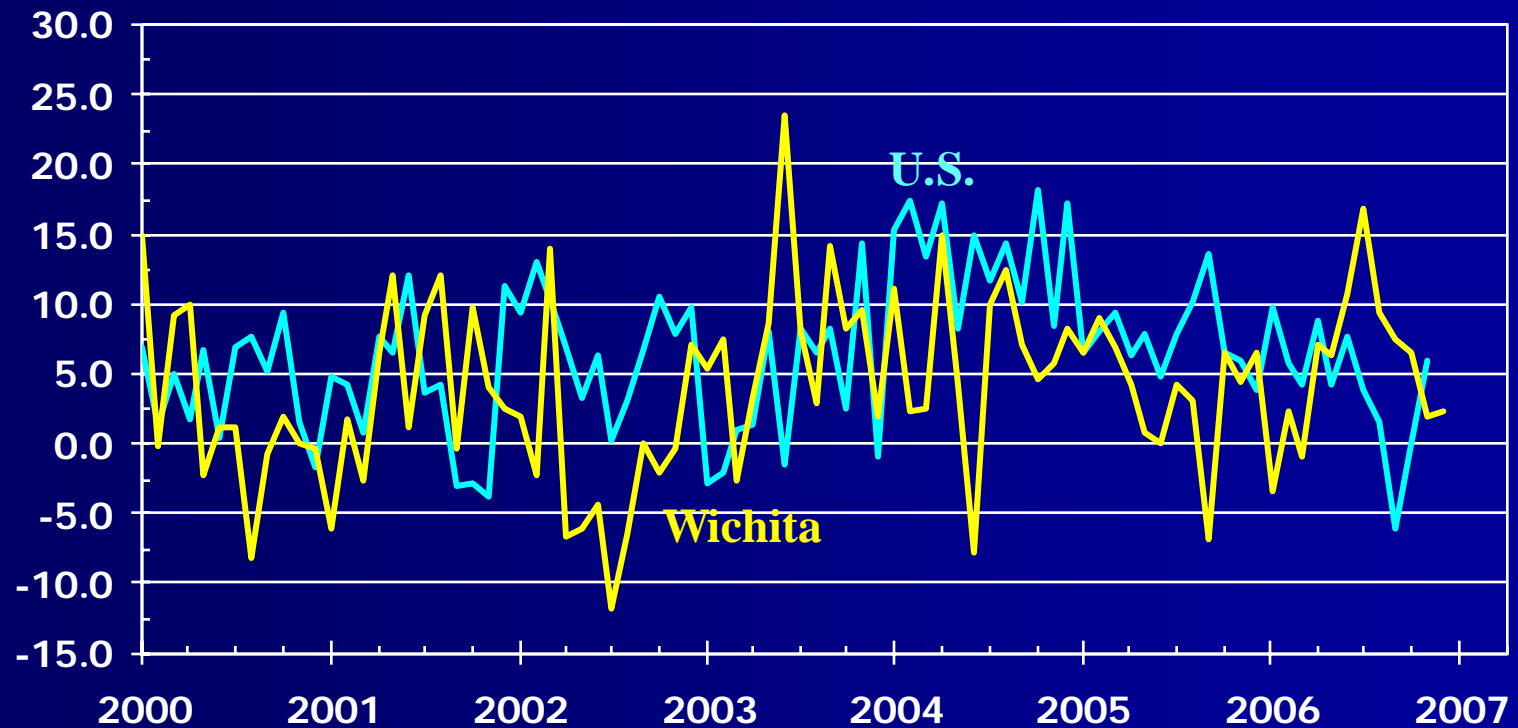


Source: SCKMLS Statistics



# Median Sale Price of New Homes

Year-over-year Percentage Change



Sources: NAR; SCKMLS Statistics



# Wichita Area Housing Inventory

Months Supply (SA)



Source: WAAR MLS Statistics



# Graph Placement Template

Percent

Source: Board of Governors of the Federal Reserve System

